

**Mechanical and Electrical Services for Typical Primary Classroom - to be read in conjunction with TGD 002, TGD 004 and TGD030.**

Each teaching space shall be controlled via two port motorised valves with electrically powered digital thermostats with a lockable range of 21 degrees Celsius + / - 3 degrees.

All thermostatic mixing valves on the hot water services to be connected as outlined on the "Thermostatic Mixing Valve Installation drawing RT-TMV-001" of TGD-30.

Mains water is only required at the classroom sink.

All lights fitted with automatic lighting controls must also have a manual on / off switch.

Lighting control in classrooms/ teaching spaces should be such that all lights in the space are linked to one sensor such that all lights respond in the same manner to the control signals.

Lighting controls in classrooms are to be based on absence detection to turn off lights and daylight sensing to dim lights as required to off, in response to the daylight sensor.

Lighting Controls in ensuite toilets to be based on manual on/off switching with automatic absence detection only. One linear high frequency fluorescent fitting per cubicle and lobby will suffice.

IT Area (no. 4 on plan) Dado Trunking to contain 5 no. data points and 16 no. 13 A socket outlets.

The teaching wall shall have one thermostat, one two-way PA loud speaker, a horizontal run dado rail trunking incorporating two twin socket outlets and one network point. The dado rail trunking shall be run at a height of 550mm above FFL.

The exact location of the network point and associated socket outlet at the teacher's base shall be agreed with the school Principal at an early stage in the design development. Where there is no Principal the Department's Technical Staff shall be contacted for advise and guidance.

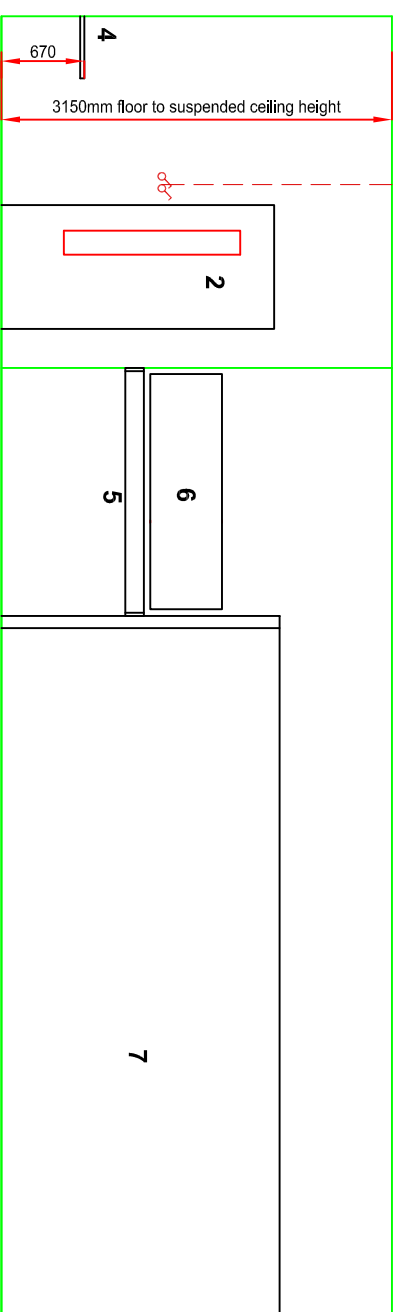
1 no. twin socket outlet above the whiteboard for Data Projector  
No other sockets are required.

BUILDING SERVICES ENGINEERING SYMBOLS	Plan	Elevation
Light switches (fixed 1100mm above FFL)		
Twin switched 13 A socket outlets		
Public Address Speaker (fixed 1600mm above FFL)		
Dado trunking		
Network point		
Water supply (hot & mains potable water)		
Radiator		
Room Thermostat (fixed 1500mm above FFL)		
Thermostatic blending valve		
1 x 49w surface mounted fluorescent c/w high efficiency T5 lamps and prismatic diffusers. Automatic dimming version.		
1 x 35w surface mounted fluorescent c/w high efficiency T5 lamps and prismatic diffusers.		
Ceiling mounted daylight/ movement sensor		
Movement Detector		

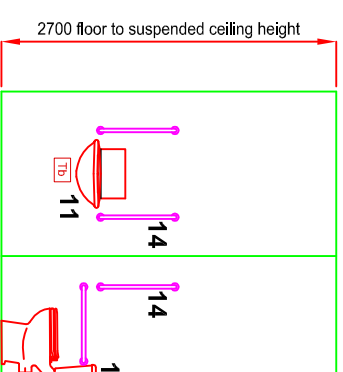
See Drawing TDG 022 - D01 to reference numbers on elevations with general description.

PRIMARY ROOM LAYOUTS		SCALE:	nts
<b>TYPICAL CLASSROOM - ELEVATIONS</b>		DRG No.:	TGD 022 - D02
<b>DRAWING 2 of 2</b>		DATE:	Nov '08
REVISION:	03	DATED:	August 2012
STAGE:	DOCUMENT ADDENDUM APPROVED	APPROVED BY :	P+T
		PREPARED BY:	C.D

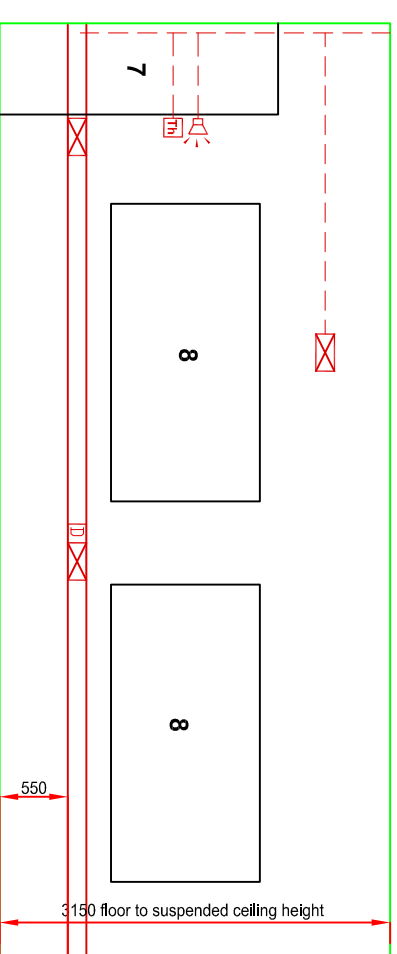
**DEPARTMENT OF EDUCATION & SKILLS**  
*An Roinn Oideachais agus Eolaíochta*  
**PLANNING AND BUILDING UNIT**



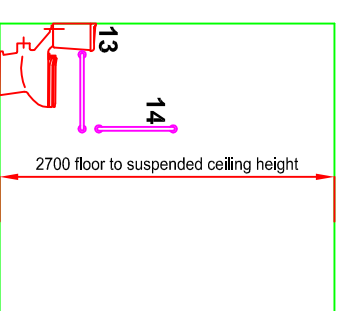
**ELEVATION: A-A**



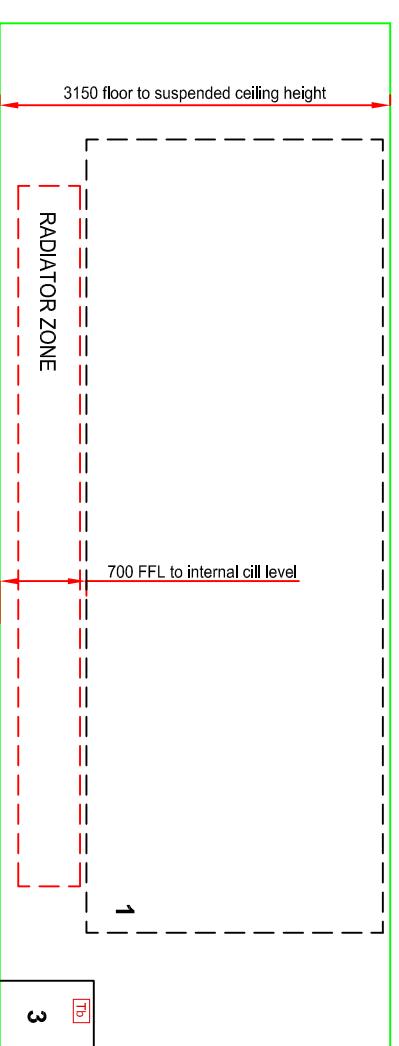
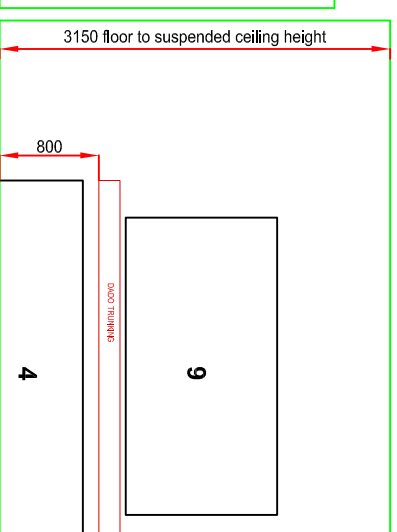
**ELEVATION: F-F**



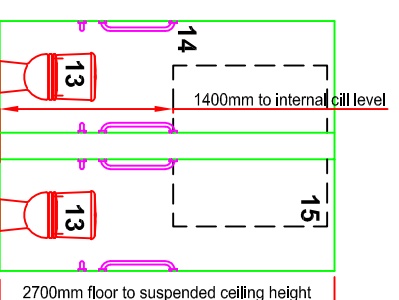
**ELEVATION: B-B**



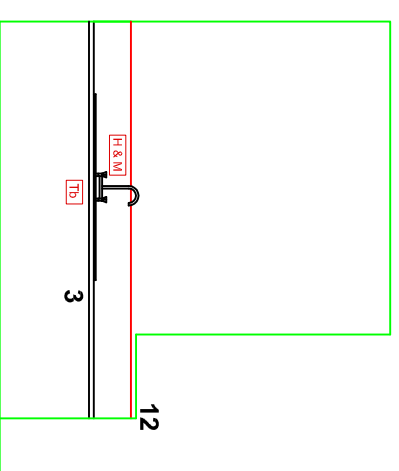
**ELEVATION: D-D**



**ELEVATION: C-C**



**ELEVATION: E-E**



**NOTES**

- This document is published by the Department of Education & Science and provides guidance in relation to the requirements for a Typical Primary School Classroom. The document should be read in conjunction with the Technical Guidance Documents for Primary School Buildings as published by the Department of Education & Skills. <http://www.education.ie/en/School-Design/Technical-Guidance-Documents/>
- Where works are carried out in accordance with the guidance in this document, this will, prima facie, indicate compliance with Technical Guidance Documents for Primary School Buildings as published by the Department of Education & Skills. However, the adoption of an approach other than that outlined in the guidance is not precluded provided that the relevant requirements of the Technical Guidance Documents are complied with.
- Please do not scale the drawing use figured dimensions.
- All dimensions given are in millimetres
- All room dimensions are "internal dimensions".
- Area - Net internal area of the room (including recess outside classroom).
- All elevations are internal room elevations.